

Medical Marijuana Control Program



Guiding Principles

- ▶ Patient-centered and safe
- ▶ Responsive, data-driven, and transparent
- ▶ Flexible, scalable, and sustainable
- ▶ Characterized by consistency, integrity, and collaboration across one program

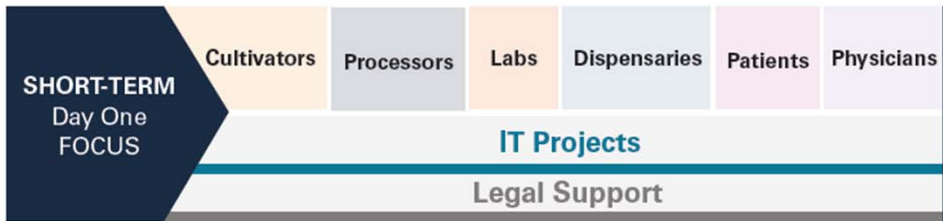


Operational Status

- ▶ Cultivators
 - ▶ Twenty-six provisional licenses
 - ▶ Six Certificates of Operation
 - ▶ Inspections:
 - ▶ September Total 4
 - ▶ Extension Requests
- ▶ Processors
 - ▶ Round One - 11 Provisional Licenses
 - ▶ Round Two
- ▶ Testing Labs
 - ▶ Four Provisional Licenses
 - ▶ Two Public University
 - ▶ Two Private Labs
- ▶ Audit Report



Strategy





SEPT 2016



Establishes Framework

- Interviewed Industry Experts
- Visit states with medical marijuana programs
- Stakeholder meetings
- Public hearings regarding rule drafts – taking feedback
- Rules needed/received approval by two governing bodies

- Building IT Infrastructure
- Organizational Development
- Application Research
- Application Development

MAY 2017

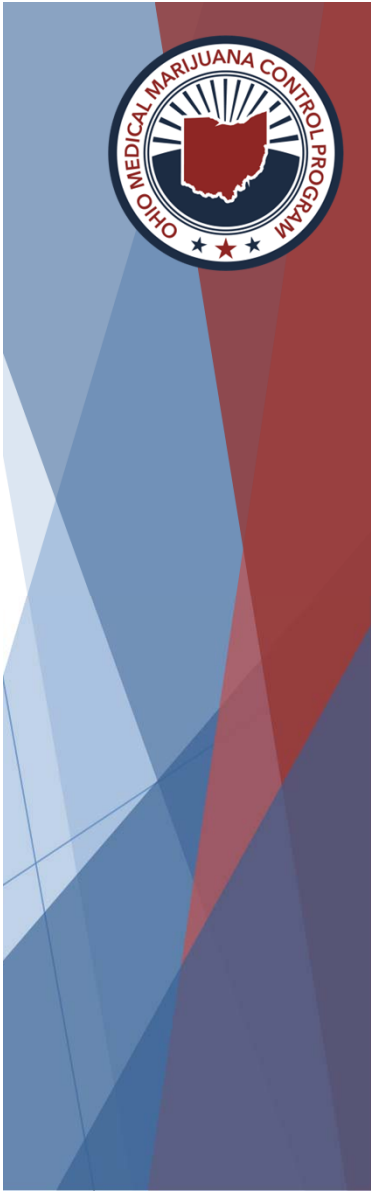
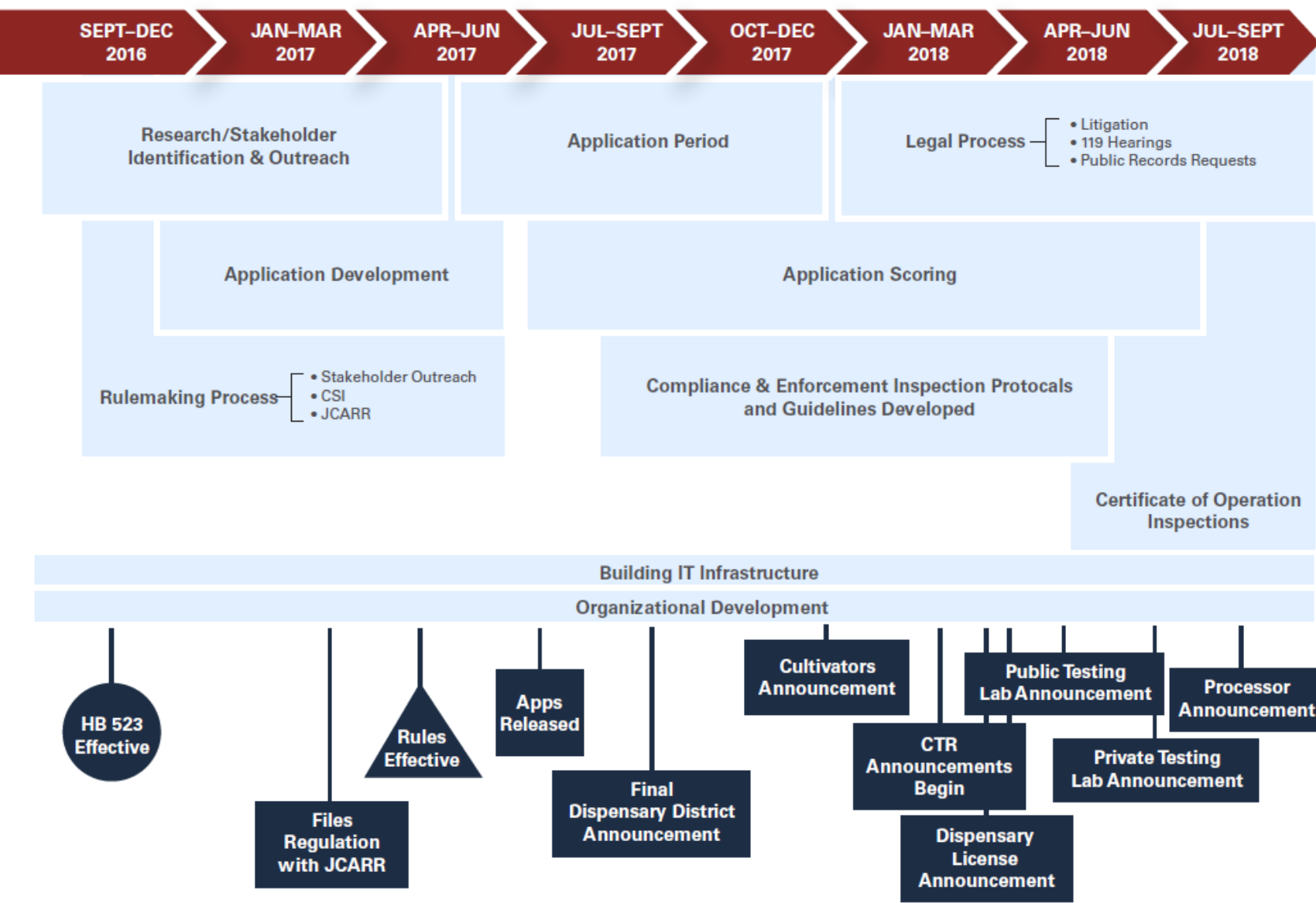


Rules supporting HB 523

Navigating A New Industry

- ▶ Legal Challenges
- ▶ Scoring Errors
- ▶ Understanding Considerable Public Interest
- ▶ Federal Status of Marijuana
- ▶ Business Challenges: Provisional to Operational







- ▶ Public Safety and Welfare
- ▶ Designing A Scalable Program
- ▶ Establishing Ongoing Operational Governance
- ▶ Stakeholder Relations and Public Education
- ▶ Updating Policy Issues

LONG-TERM
OPERATIONAL
SUPPORT
ORGANIZATIONAL
STRUCTURE

Compliance/
Enforcement

Ongoing Licensing

Patient Safety

Regulatory Coordination



- ▶ Compliance Inspections
- ▶ Enforcement Issues
- ▶ Ongoing Employee Licensing
- ▶ Ongoing Market Evaluation
- ▶ Flexibility To Future Policy and Legislative Changes

Certificates to Recommend

- ▶ 293 active CTRs in Ohio
- ▶ 71 of those were issued during yesterday's board meeting



Qualifying Conditions

- ▶ First submission period
 - Nov. 1, 2018 - Dec. 31, 2018
- ▶ Ad hoc committee of the medical board
 - Find and approve experts to review petitions to add qualifying conditions
 - Help inform board's decisions



Cannabidiol (CBD) Guidance

- ▶ Snapshot of existing federal and state statutes
 - ▶ Not a change in rule
 - ▶ Not a change in policy
- ▶ Due to increased number of inquiries to the Program
 - ▶ Wide range of individuals
 - ▶ Included those holding DEA licenses interested in stocking CBD
- ▶ Patient safety
 - ▶ Unregulated
 - ▶ Product contents unknown



Provisional Dispensary Licensees (PDL)

PDL Engagement

- ▶ Monthly newsletter published
- ▶ Employee licensing guidance
- ▶ Agents to speak directly with PDLs for updated information on progress toward Certificates of Operation

Progress Toward Operation

- ▶ Submission for Training and Continuing Education materials commenced
- ▶ Survey to cultivators and processors to gather information for product identifier assignments
- ▶ Continued review of variances and advertising materials

119 Hearing Requests

- ▶ 47 Pending hearing requests



Patients & Caregivers

Patient & Caregiver Registry Guide for Physicians

Registering patients & creating recommendations



Reciprocity

- ▶ Discussions continuing with other state programs
- ▶ Addressing reciprocity requirements including waivers for both in-state and out-of-state patients
- ▶ Once established, guidance documents for patients, caregivers, dispensaries and law enforcement will be created

